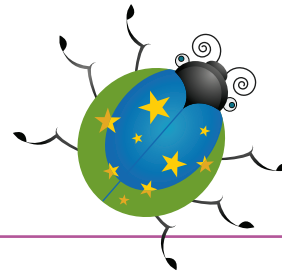


How Beetle got her colours



Who was the strongest character in the story?

Why do you think that?

What character is most like you?

If you had been in the forest, what would you have done?

What might stop you from doing what you'd really like to do?

What do you think are the three most important lessons in the story? Colour them in. Share your choices in a whole class discussion.

Treat others the way you want to be treated.

Get to know someone instead of judging them.

Help others without being asked—don't pretend you don't know.

Believe in yourself, no matter what others may say.

Be the best you can be.

Never take advantage of people who are smaller than you.

Always show respect to the people around you.

We are all responsible for each other.

Stand up for people that are being treated unfairly.

Everyone has a special gift.

Be a leader, not a follower.

Other...