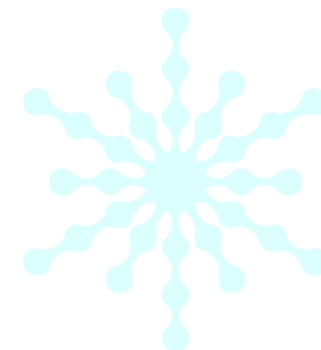
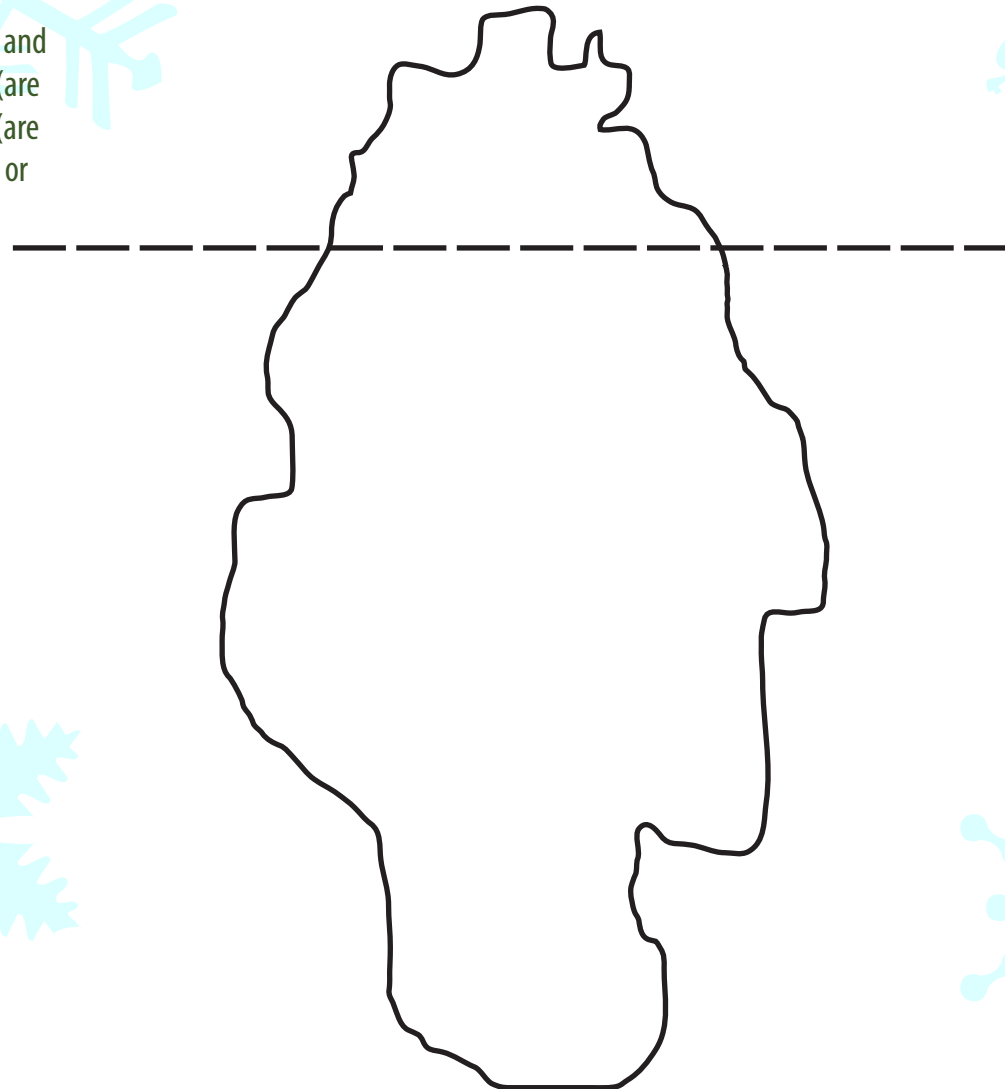


Iceberg culture

Review the features of culture one by one and decide which ones belong above the line (are visible) and which belong below the line (are invisible). Place each feature either above or below the water line.



Iceberg culture

1. Rules of polite behaviour
2. Holidays
3. Beliefs about bringing up children
4. Clothing styles
5. Gestures that show you understand something
6. Religious beliefs
7. Ideas about beauty
8. Foods
9. Beliefs about the responsibilities of teenagers
10. Celebrations
11. Ideas about gender roles
12. Ways of greeting people
13. Religious rituals
14. Attitudes to work
15. Ideas about how to dress
16. Music
17. Attitudes towards elders
18. Ideas about friendship
19. The role of or ideas about family
20. Ideas about fairness

